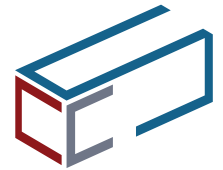




Want to increase profit while you simplify your processes?

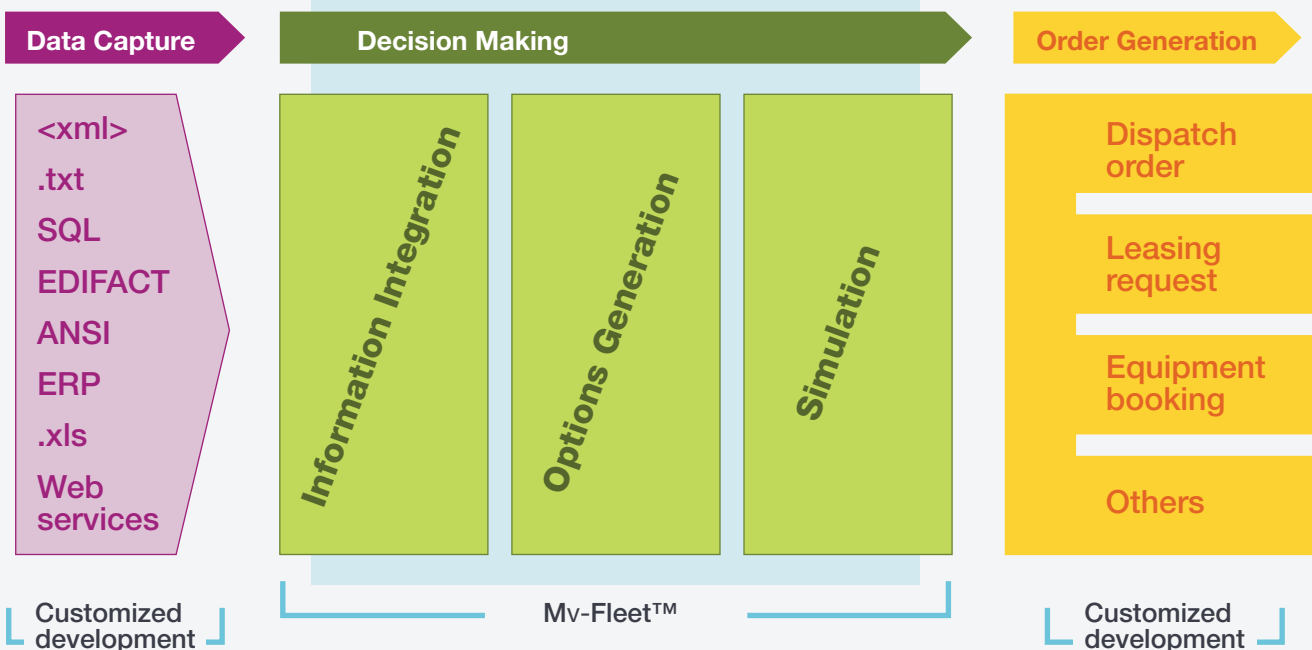


You can do it using Mv-Fleet™, an interactive on-line platform that optimizes container management, anticipates bottlenecks, reduces cost and creates new business opportunities.

Your commercial, equipment and operations departments need data to take decisions and then generate orders. So, why the most traditional shipping software make this task so hard? Because typically they help you to capture data and generate orders, but decisions still require pulling hundreds of reports and analyze them outside the system. Everything goes to your overworked people and each of them has to justify their decisions.

Mv-Fleet takes the data generated from different sources (from current systems or directly from ports, depots), shows a single graphical-aid, and using optimization algorithms provides options that facilitate decision making process. Then these decisions generate transport orders (developed by CC&S on demand and tailor made to shipping line needs). The result is a business intelligence process, so users can explore, analyze, predict and forecast, and automate key processes.

Mv-Fleet™ process overview



With Mv-Fleet™ all departments are looking at the same **key information** at the same time, while they keep focus on their specific task.

Commercial teams

Improve demand forecasting.

Your company relies on prompt forecasting updates from shippers to reduce costs. Mv-Fleet™ facilitates this by instantly showing the actions that can be taken to cover their changes. It promotes optimum forecasting performance and improves your service.

Help shippers in marketing their products.

Are your shippers' customers increasingly looking for products with the lowest impact on the environment? Through Mv-Fleet™, your shippers can measure the carbon emissions savings to their supply chain and can use this in marketing to customers. Hint: It allows you to establish an index per shipper based on achieved cost and emissions savings due to prompt forecasting and booking updates.

Justify rate adjustments.

If the market conditions require rate increases. Use Mv-Fleet™ to simulate rate adjustments to submitted forecast allowing exporters to immediately accommodate forward sales.

Logistics/Equipment teams

Bring strategic information at your fingertips.

Mv-Fleet™ integrates forecast, ship-voyages, empty container inventory and equipment move plans into a single tool and allows you to prevent bottlenecks.

Support equipment availability processes.

A shipper runs short of empty containers and you can't afford to lose the business due to delayed operational decisions. Mv-Fleet™ calculates the options for you, so that you become proactive by proposing the best choice(s) to cover customer demand.

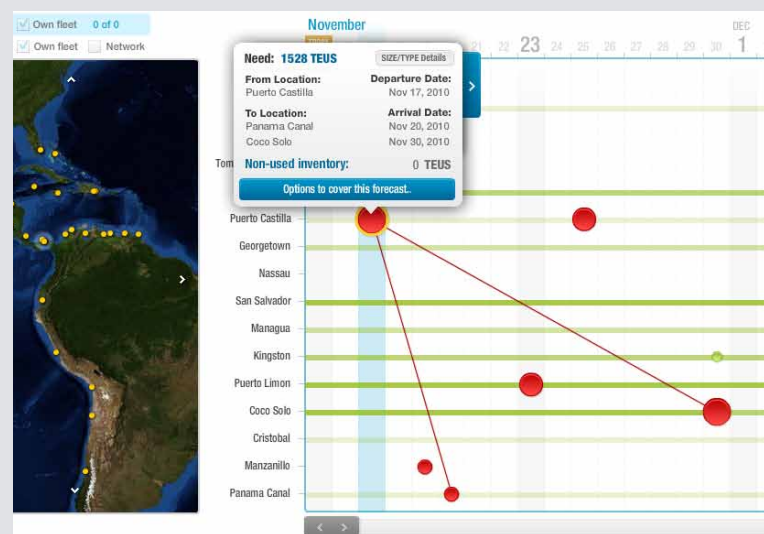
Vessel Operations teams

Reduce costs to improve company results.

Due to market instability, most of your expected earnings should come from operating cost savings. With Mv-Fleet™ commercial, equipment and operations departments use the same single graphical aid for decision-making process, minimizing the time and cost for vessel planning.

Boost efficiency.

Cover more business with your existing vessel fleet (use less to do more). By visualising the purpose of an empty container movement you optimize your vessel spaces. Give a new dimension to your equipment fleet.



Mv-Fleet™ technical details:

Is Web-based and requires a standard web browser. Supported: Internet Explorer 6.0 or above, Mozilla Firefox 3.0, Safari or Google Chrome. With Javascript enabled and Adobe Flash Plugin 10.1 or above installed.

It is a Hosted Service (Software as a Service). Also customers can choose to host Mv-Fleet™ in their own servers.

Service Oriented Architecture.

Build with Microsoft .Net MVC Framework, using C#.

Runs on Microsoft Windows Server 2008 and SQL Server 2008.

Mv-Fleet™ is designed using web standards as XML and REST, so it can be easily integrated with other business systems such as ERP, CRM, accounting packages and in-house developed applications.

We invite you to see our DEMO video:
www.containerconsultants.com/video

The Company.

Container Consultants and Systems (CC&S) is a private and independent company founded by experts in the shipping industry with more than 50 years of combined experience. CC&S is research partner of the Massachusetts Institute of Technology (Boston, US). Mv-Fleet™ is developed by CC&S in collaboration with ocean carriers and industry experts.

Let us explain you more details in a 20 minutes remote meeting. Contact us:
Sebastian Mendoza

email: smendoza@containerconsultants.com

phone: +1(201).355.00.44

skype: container.consultants

USA | Direct contact

Phone: + 1 (201) 355.00.44

E-mail: info@containerconsultants.com

PANAMA | Support and Development Center

Phone: + (507) 6672.40.07

E-mail: support@containerconsultants.com

BRAZIL | Regional office

Phone: + 55 (11) 3717.10.17

E-mail: info@containerconsultants.com

Headquarter Offices

Container Consultants & Systems, S.A.

City of Knowledge (Ciudad del Saber)

Building 234, Clayton

Panama, Republic of Panama

Phone: + (507) 317.31.00

Fax: + (507) 317.01.00
